

Email Protection Plans

Securing beyond the gateway

Luca Bin

Senior EMEA Inside SE

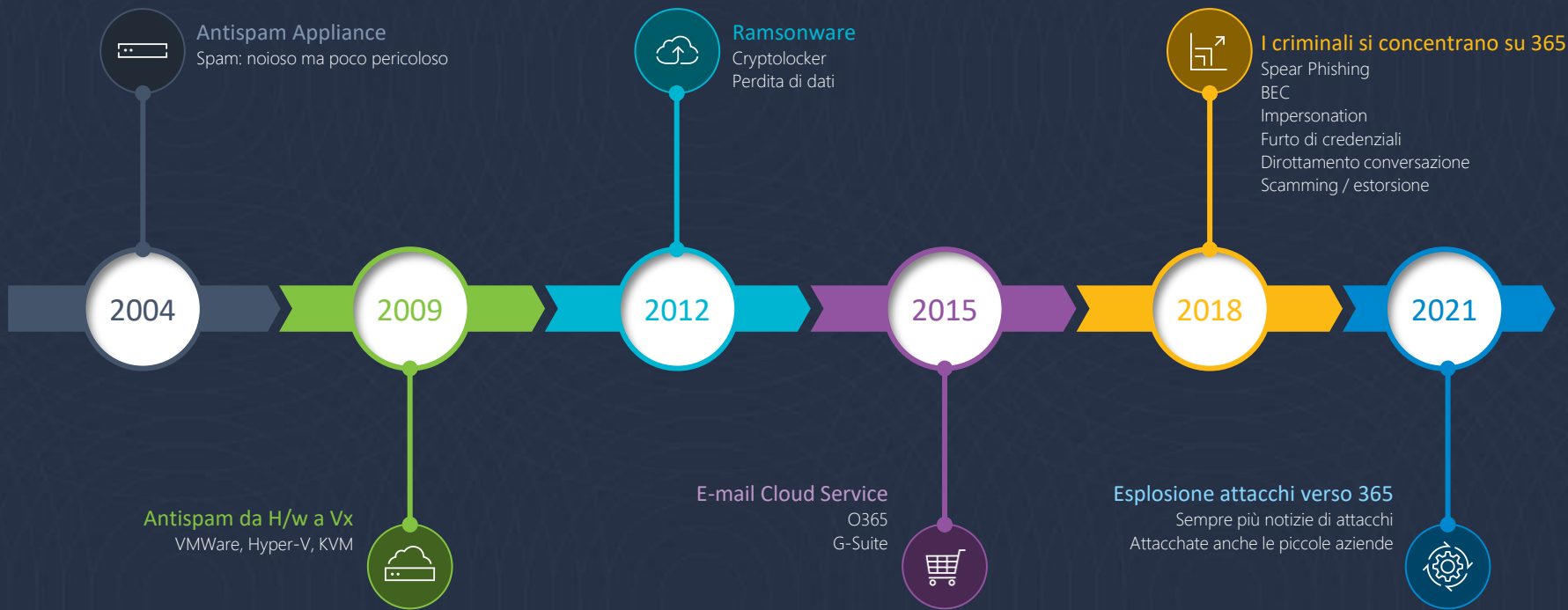
LBin@barracuda.com

Pietro Felisi

Sales Engineer

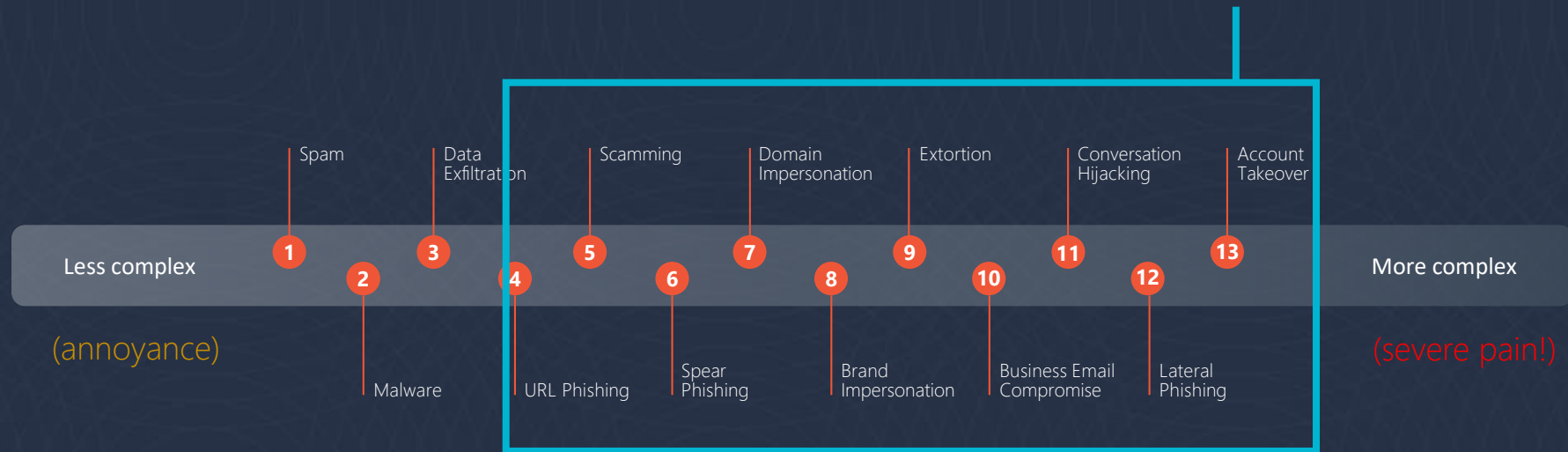
PFelisi@barracuda.com

Email Security – Evoluzione delle minacce



The universe of email threats

Lower volume, higher impact



So, some highly publicized attacks are relatively easy to execute, but others are more complex and require more resources. The latter are often the most damaging, as they can lead to severe financial and reputational damage. The latter are often the most damaging, as they can lead to severe financial and reputational damage.



Barracuda's integrated approach to securing Microsoft 365

THREAT PREVENTION

Spam, Malware, and ATP
Phishing and Impersonation Protection
Account Takeover Protection
Domain Fraud Protection
Web Security
Zero Trust Access for Microsoft 365

DETECTION AND RESPONSE

Incident Response
Security Awareness Training

DATA PROTECTION AND COMPLIANCE

Email Encryption and DLP
Cloud-to-Cloud Backup
Cloud Archiving Service
Data Inspector™



Barracuda
Email Protection™



Solution options - Plans?

Barracuda Email Protection plans

Capabilities	Advanced	Premium	Premium Plus



Services..... Without 365

- Email Gateway Defence
- Security Awareness Training
- Cloud Archiving
- Web Security
- Domain Fraud Protection
- Impersonation Protection
- Incident Response
- Cloud to Cloud Backup
- Data Inspector
- CGA for 365



Services..... Without 365

- Email Gateway Defence
- Security Awareness Training
- Cloud Archiving
- Web Security
- Domain Fraud Protection
- Mail Server Protection
- Exchange on Prem
- Suite to Cloud Backup
- Data Director
- Kaspersky Zifera
- MDemon
- Others

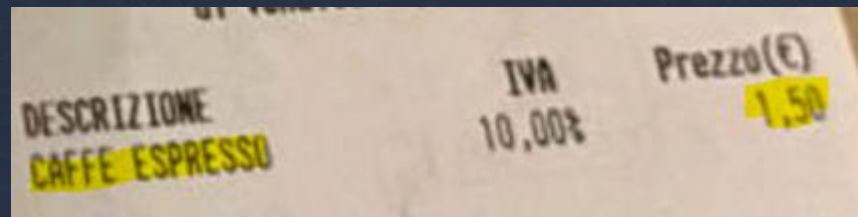


Barracuda invite consider your current costs of services developing Email Security Plans

- How many vendors do you have for your email security, back up, archiving, web security, security training, ZTNA for 365?
- What is your cost of each individual solution?
- How much time your team spends on set up and management of these solutions?
- How much time your IT team spends on post-delivery remediation?
- What is the cost of phishing or ransomware attack getting through?
- What level of support do you get with from your current vendors?



Virtual Coffée Break



Impersonation Protection

How does it work?



Inbox defense technology



multiple classifiers



Inbox defense technology



Understands abnormal behavior based on an **identity graph**



Gateways = 100s of rules for 1000s of individuals = **not scalable**



Incident Response

Post delivery check & remediation.....



Threat hunting:

Enable proactive threat discovery based on new and shared intelligence

Remediation:

Simplify the process of removing unwanted email post-delivery.

Automation:

Automate the process of threat discovery and clean-up and continuously improve your security

Email Threat Scanner

Open the black box.....

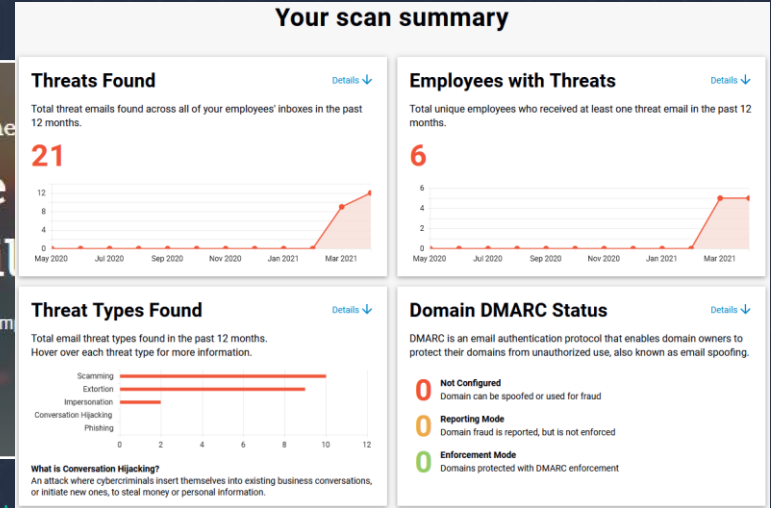
Email Threat Scanner

Barracuda Email Threat Scanner

Serious threats may be in your Office 365 mailbox

Scan your Office 365 environment. It's fast, free and safe—with no impact on your users.

[SCAN YOUR EMAIL NOW](#)



<https://scan.barracudanetworks.com>



M365 Backup

Isn't it included?.....

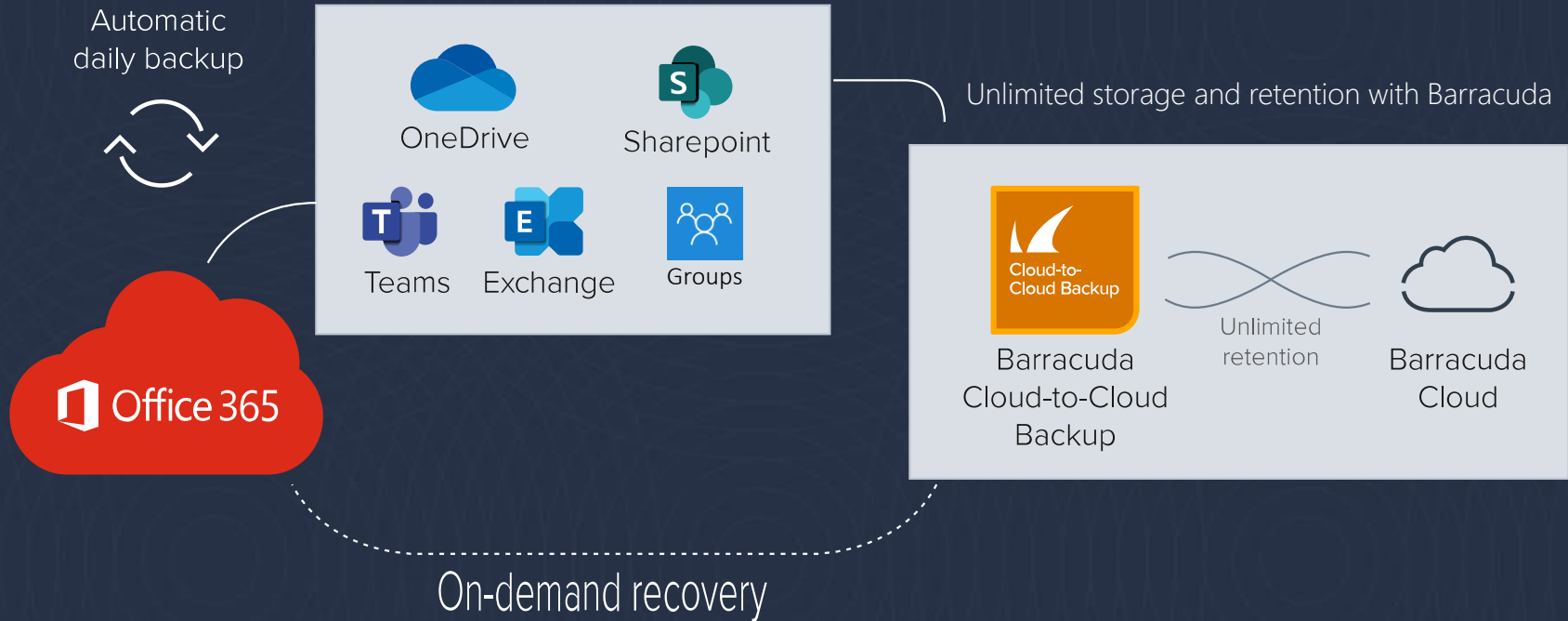
IL consiglio di microsoft...

- Contratto di Servizi Microsoft
- Capitolo 6, comma b

b. Microsoft si impegna a mantenere i Servizi attivi e funzionanti; tuttavia, non vengono offerti con un livello di qualità garantito e tutti i servizi online sono soggetti a malfunzionamenti e interruzioni occasionali. Nell'eventualità di un blackout o di un'interruzione del Servizio, **l'utente potrebbe non essere in grado, di recuperare il Contenuto dell'utente. Microsoft consiglia all'utente di eseguire regolarmente un backup dei Dati e del Contenuto dell'utente archiviato nei Servizi o di archivarlo utilizzando le App e i Servizi di terzi.**



Office 365 data backup



Email Archiving

Is it a must?.....

Perché archiviare le email?



I messaggi di posta elettronica con contenuto e rilevanza giuridica e commerciale devono essere conservati per **dieci anni**. In quanto corrispondenza, devono essere conservati ordinatamente per ciascun affare secondo le prescrizioni dettate **dall'articolo 2214** del codice civile.

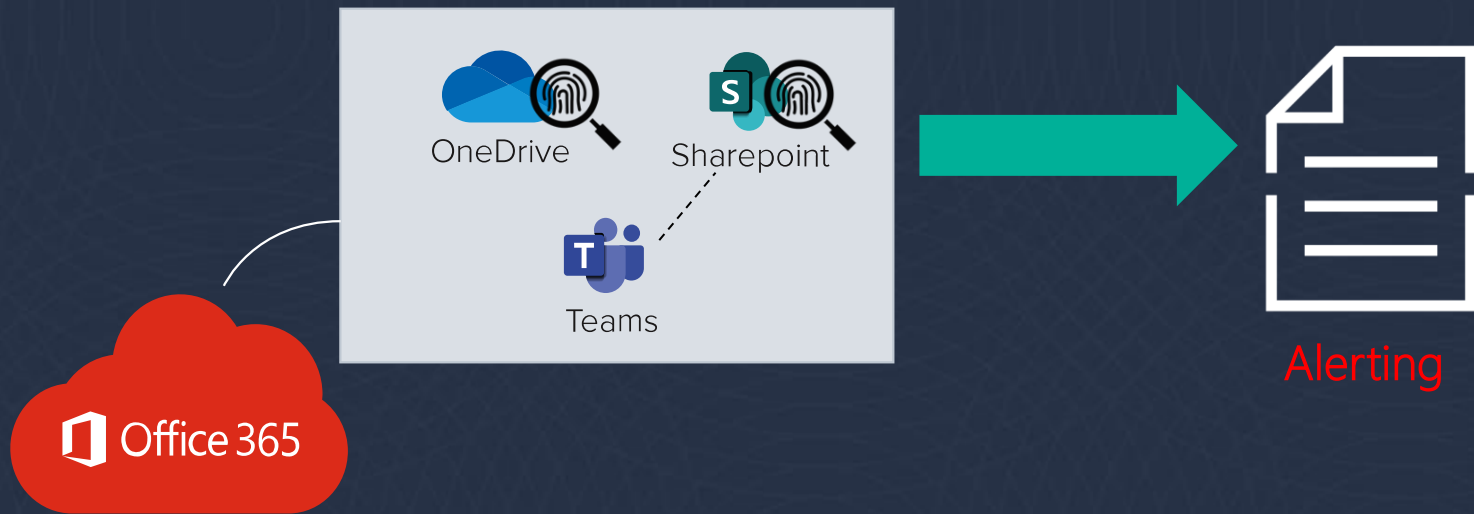
Le e-mail a contenuto commerciale, in particolare, vanno custodite anche a fini **fiscali** nel rispetto **dell'articolo 22 del Dpr 600/1973**.



Data Inspector

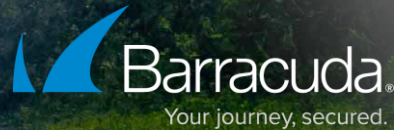
GDPR helping tool.....

Office 365 data Inspector

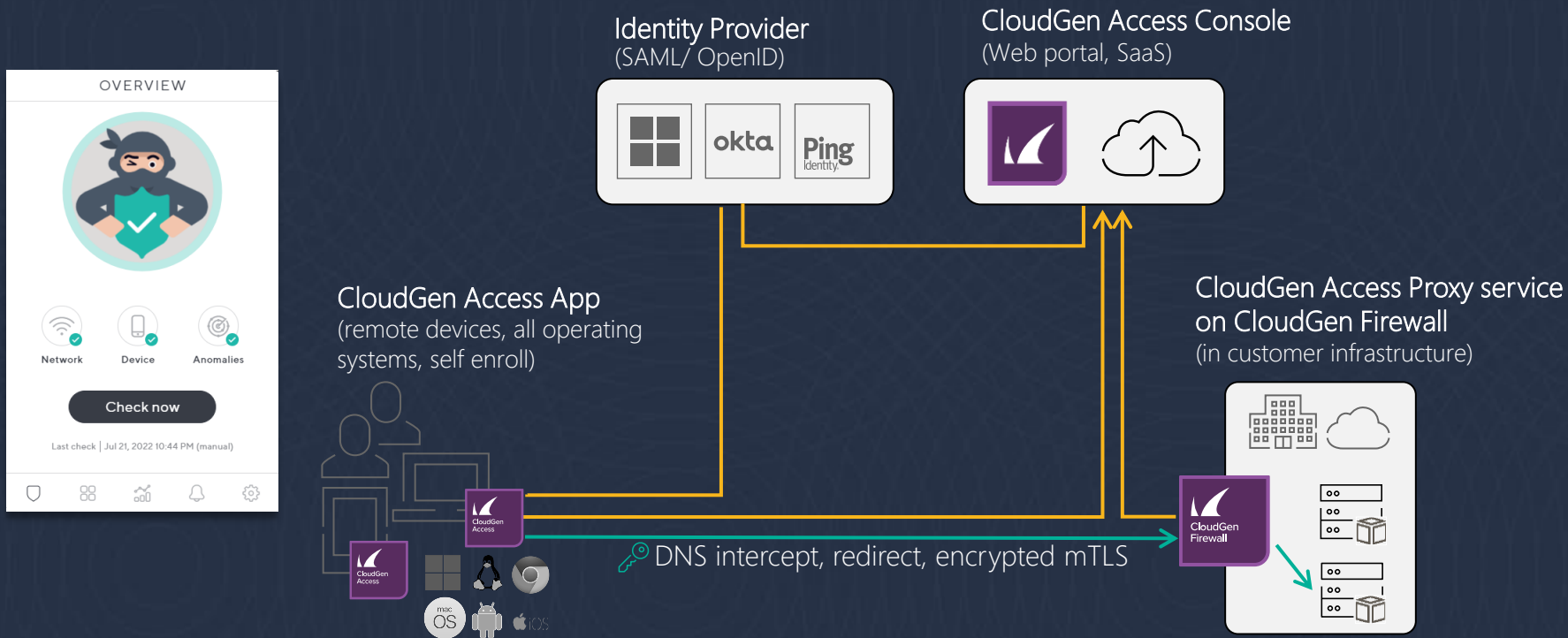


Zero Trust Network Access

Rising up User Authentication.....



Zero Trust Network Access Architecture



WAF as a service

Application Security entry point.....

Barracuda WAF-as-a-Service

Enterprise-proven application security delivered in minutes

WAF



Barracuda
WAF-as-a-Service

Built on the same **proven** technology

Simple 5-step setup wizard adds protection in minutes

Intuitive component-based structure for fine-tuning policies

Fully featured **REST API**

Always-on **unmetered DDoS protection** included

Automated vulnerability identification and remediation

How it works



User
(Browser)



App Servers

Barracuda Cloud Scrubbing Centers
(Multiple Locations Worldwide)

Over 56 PoP's – Azure and Own DC's



Thank You





 **Barracuda**[®]
Your journey, secured.